

# FLUOR-O-FLO®

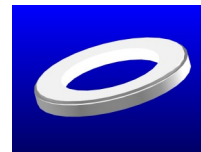
## Armored Ring Spacers and Full Face Flanges

PTFE • PVDF • also PPL • CPVC

### Standard Class 150 (150 lb.) Armored Ring Spacers

**BASE PART NUMBER:** As shown below, the BASE PART NUMBER defines the Series (three characters), the material (one character), the nominal size, and the thickness **TH**. Use a decimal number to indicate the nominal size. Then, for thicknesses up to 6", replace the **TH** with the decimal thickness. For thickness over 6", contact factory. Note that the **Class** (or **lb.**) designation does not imply a pressure rating.

For example, a 3/4" Class 150 PTFE Armored Ring Spacer x 1" thick would be **SART-0.75-1**



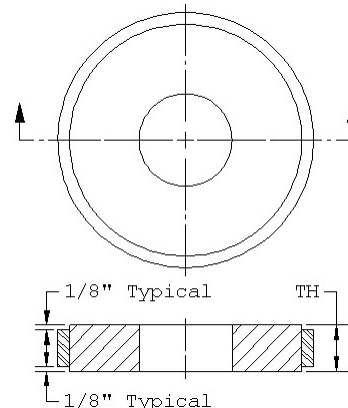
### Options

**LOCATING TABS:** For optional locating tabs, add to the Base Part Number the suffix **TAB**. For example, a 3/4" Class 150 PTFE Armored Ring Spacer x 1" thick would be **SART-0.75-1-TAB**

**CLASS 300 (300 lb.) SPACERS:** For Class 300 spacers, add to the BASE PART NUMBER the suffix **300**. For other classes, contact the factory. For example, a 2" Class 300 PTFE Armored Ring Spacer x 1-1/2" thick with **TAB** option would be **SART-2-1.5-TAB-300**

Steel jacket coated with dark blue, rust resistant enamel. Other colors on request.

Part Number Key				Option
Series	Material	Nominal Size	Thickness	Class
SAR	T = PTFE, K = PVDF P = PPL, C = CPVC	0.5 - 10 Decimal Inches	Decimal Inches	300

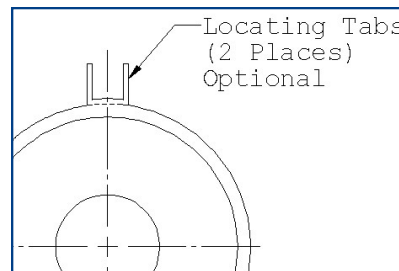


### BASE PART NUMBERS

Nominal Size	PTFE	PVDF	PPL	CPVC
1/2"	SART-0.5-TH	SARK-0.5-TH	SARP-0.5-TH	SARC-0.5-TH
3/4"	SART-0.75-TH	SARK-0.75-TH	SARP-0.75-TH	SARC-0.75-TH
1"	SART-1-TH	SARK-1-TH	SARP-1-TH	SARC-1-TH
1-1/2"	SART-1.5-TH	SARK-1.5-TH	SARP-1.5-TH	SARC-1.5-TH
2"	SART-2-TH	SARK-2-TH	SARP-2-TH	SARC-2-TH
2-1/2"	SART-2.5-TH	SARK-2.5-TH	SARP-2.5-TH	SARC-2.5-TH
3"	SART-3-TH	SARK-3-TH	SARP-3-TH	SARC-3-TH
4"	SART-4-TH	SARK-4-TH	SARP-4-TH	SARC-4-TH
6"	SART-6-TH	SARK-6-TH	SARP-6-TH	SARC-6-TH
8"	SART-8-TH	SARK-8-TH	SARP-8-TH	SARC-8-TH
10"	SART-10-TH	SARK-10-TH	SARP-10-TH	SARC-10-TH

For larger sizes, contact factory

Steel armor thickness is equivalent to or greater than the wall thickness of Schedule 80 Pipe.



For reducing, orifice, tapered or conical bore configuration, contact factory.

Product Specifications 7.2-2

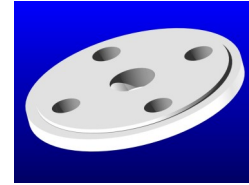
Call today for our  
 Spacers & Flanges  
 Sales Bulletin



**Standard Class 150 (150 lb.) Armored Full Face Flanges**

**BASE PART NUMBER:** As shown below, the BASE PART NUMBER defines the Series (three characters), the material (one character), the nominal size, and the thickness **TH**. Use a decimal number to indicate the nominal size. Then, for thicknesses up to 6", replace the **TH** with the decimal thickness. For thickness over 6", contact factory. Note that the **Class (or lb.)** designation does not imply a pressure rating.

For example, a 3/4" Class 150 PTFE Armored Full-Face Flange x 1" thick would be **SAFT-0.75-1**

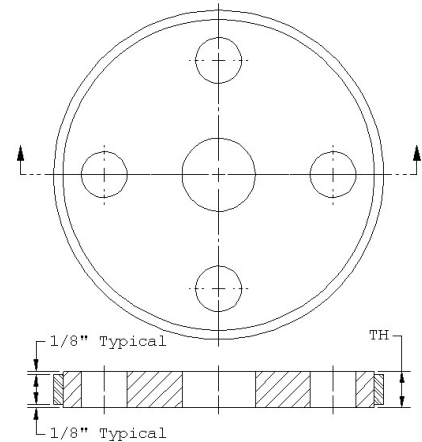


**Options**

**LOCATING TABS:** For optional locating tabs, add to the Base Part Number the suffix **TAB**. For example, a 3/4" Class 150 PTFE Armored Full-Face Flange x 1" thick would be **SAFT-0.75-1-TAB**

**CLASS 300 (300 lb.) SPACERS:** For Class 300 spacers, add to the BASE PART NUMBER the suffix **300**. For other classes, contact the factory. For example, a 2" Class 300 PTFE Armored Full-Face Flange x 1-1/2" thick with **TAB** option would be **SAFT-2-1.5-TAB-300**

Steel jacket coated with dark blue, rust resistant enamel. Other colors on request.



Steel armor thickness is equivalent to or greater than the wall thickness of Schedule 80 Pipe.

For reducing, orifice, tapered or conical bore configuration, contact factory.

Product Specifications 7.2-2

Part Number Key				Option
Series	Material	Nominal Size	Thickness	Class
SAF	T = PTFE, K = PVDF, P = PPL, C = CPVC	0.5 - 10 Decimal Inches	Decimal Inches	300

**BASE PART NUMBERS**

Nominal Size	PTFE	PVDF	PPL	CPVC
1/2"	SAFT-0.5-TH	SAFK-0.5-TH	SAFP-0.5-TH	SAFC-0.5-TH
3/4"	SAFT-0.75-TH	SAFK-0.75-TH	SAFP-0.75-TH	SAFC-0.75-TH
1"	SAFT-1-TH	SAFK-1-TH	SAFP-1-TH	SAFC-1-TH
1-1/2"	SAFT-1.5-TH	SAFK-1.5-TH	SAFP-1.5-TH	SAFC-1.5-TH
2"	SAFT-2-TH	SAFK-2-TH	SAFP-2-TH	SAFC-2-TH
2-1/2"	SAFT-2.5-TH	SAFK-2.5-TH	SAFP-2.5-TH	SAFC-2.5-TH
3"	SAFT-3-TH	SAFK-3-TH	SAFP-3-TH	SAFC-3-TH
4"	SAFT-4-TH	SAFK-4-TH	SAFP-4-TH	SAFC-4-TH
6"	SAFT-6-TH	SAFK-6-TH	SAFP-6-TH	SAFC-6-TH
8"	SAFT-8-TH	SAFK-8-TH	SAFP-8-TH	SAFC-8-TH
10"	SAFT-10-TH	SAFK-10-TH	SAFP-10-TH	SAFC-10-TH

For larger sizes, contact factory

