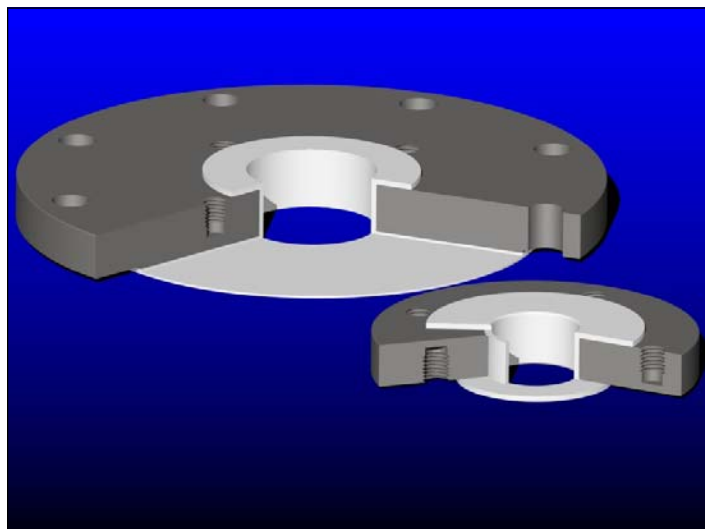


## FLUOR-O-FLO® Class 150 PTFE Lined Steel Straight-Bore Reducing Flanges



Our FLUOR-O-FLO PTFE lined steel straight-bore reducing flanges are used for connecting different size flanges of PTFE lined steel pipe or solid PTFE. While a full range of sizes are available, non-standard sizes are our specialty.

In the picture at the left, the larger image is a cut-away of a Type S reducing flange and the smaller image shows a Type C. Please see below for further information.

For dimension table and part numbers, please see our Class 150 PTFE Lined Steel Straight-Bore Reducing Flanges Product Specifications.

- Standard sizes from 1" x 1/2" up to 14" x 1/2".
- Other sizes, contact factory.
- Type C with two sets of blind threaded holes is used when larger nominal size is close to the smaller nominal size (eg. 12" x 10").
- Type S with one set of blind threaded holes and one set of plain through holes, is used for other combinations (eg. 12" x 8", 12" x 6", etc.).
- Standard products correspond to ASME 16.5 Class 150 sizes. Other classes (eg. Class 300) or ISO metric sizes are available.
- Carbon steel is either ASTM A105 or ASTM A516 grade 70.
- Stainless steel and other metals are available.

---

Call today for our  
PTFE Lined Steel Straight-Bore  
Reducing Flanges  
Product Specifications