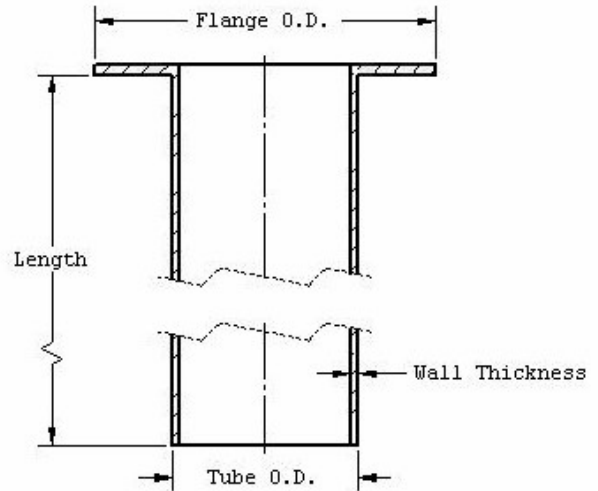
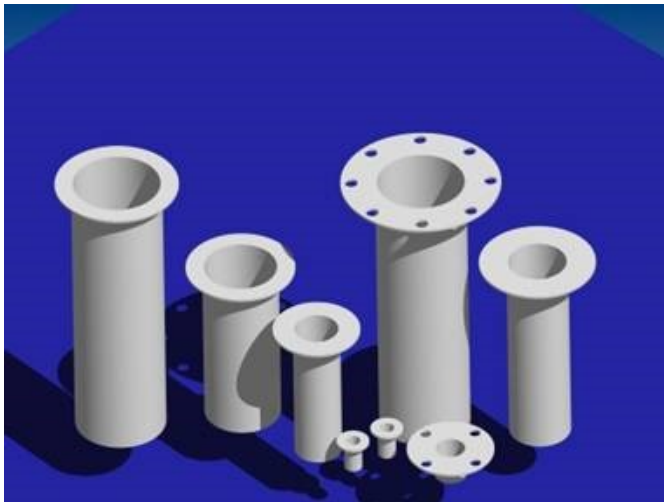


FLUOR-O-FLO®  
**Nozzle Liners**

Solid Virgin PTFE



**Nozzle Size**

Standard liners fit nozzles from 1/2" to 18" pipe size. Special sizes available on request.\*

**Length**

Up to 4" nominal pipe size, lengths available to 15 feet. Over 4" nominal size, lengths available to 30".

**Flange Diameter**

Minimum diameter of flange of standard liners corresponds to the raised face of ANSI Class 150 flanges. Full face or other special flange diameters available on request.

**Thickness**

Wall thickness of standard liners increases with liner size, from a minimum of 1/16" wall up to 1/4" wall. Nonstandard wall thickness available on request. Seal thickness equal to wall thickness standard, other seal thicknesses available on request.

**End**

Square cut end is standard. Diagonal cut available on request.

\*Our nozzle liners are designed to fit both Schedule 40 and Schedule 80 piping:

- Sch 40, 1/2" through 18"
- Sch 80, 1" through 10"

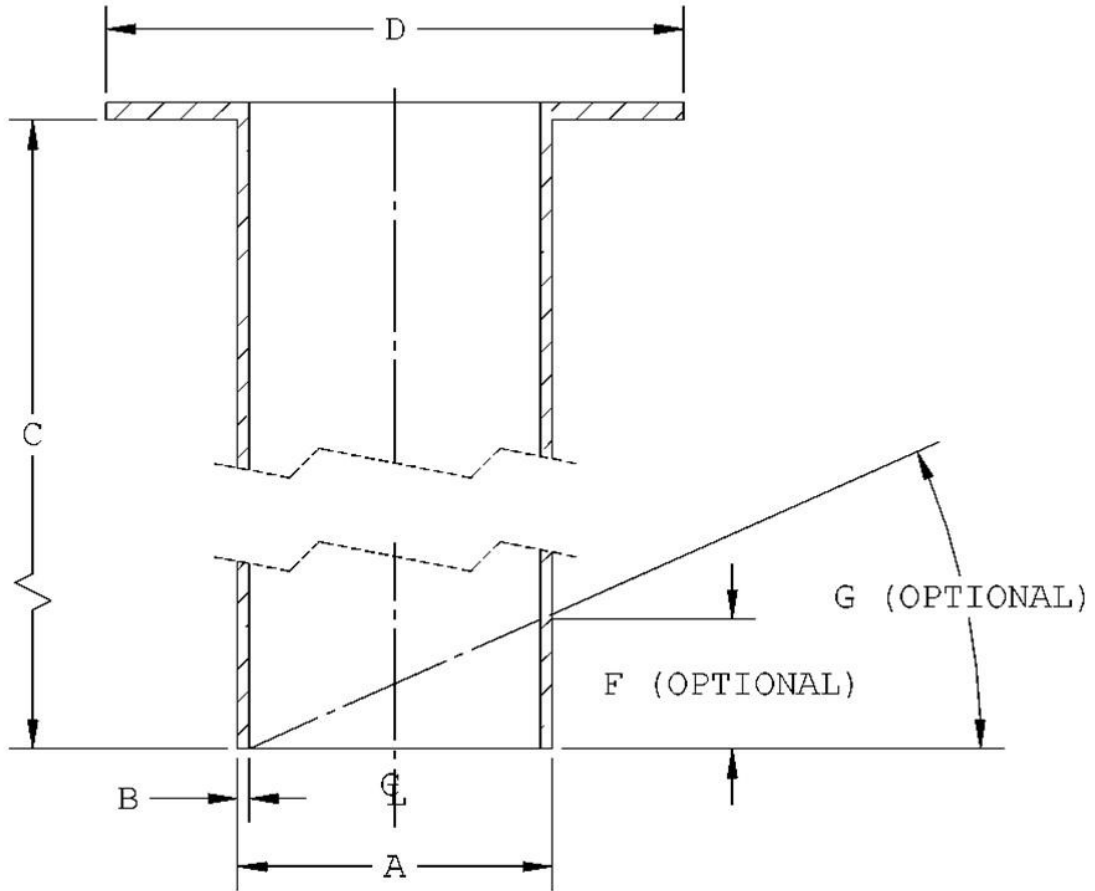
Nominal Pipe Size	Tube O.D.	Flange O.D.	(T) Wall Thickness	(L) Max. Length
1/2"	9/16"	1-3/8"	1/16"	15 ft.
3/4"	11/16"	1-11/16"	1/16"	15 ft.
1"	7/8"	2"	1/16"	15 ft.
1-1/2"	1-3/8"	2-7/8"	1/8"	15 ft.
2"	1-7/8"	3-5/8"	1/8"	15 ft.
3"	2-3/4"	5"	1/8"	15 ft.
4"	3-1/2"	6-3/16"	1/8"	15 ft.
6"	5-5/8"	8-1/2"	5/32"	30 in.
8"	7-1/2"	10-5/8"	5/32"	30 in.
10"	9-1/2"	12-3/4"	3/16"	30 in.
12"	11-1/2"	15"	7/32"	30 in.
14"	12-5/8"	16-1/4"	7/32"	30 in.
16"	14-5/8"	18-1/2"	1/4"	30 in.
18"	16-5/8"	20-1/2"	1/4"	30 in.

NOTE: Custom sizes, heavier wall thickness, diagonal cuts available on request. Contact factory

Call today for our  
Nozzle Liners Sales Bulletin

For worksheet, see reverse side.

# Nozzle Liner Worksheet



<u>Dimension</u>	<u>Description</u>	<u>Size</u>
------------------	--------------------	-------------

Required Data: \_\_\_\_\_

- |   |  |   |
|---|--|---|
| A | Sleeve O.D. (smaller than the nozzle I.D. by 1/8" or more) | _____ (max.—18" pipe size)                  |
| B | Sleeve wall thickness                                      | _____                                       |
| C | Sleeve length (excluding flange)                           | _____ (see chart on page 1 for max. length) |
| D | Flange O.D.  | _____ (max.—21")                            |
| E | Flange thickness   | _____                                       |

Optional Data: \_\_\_\_\_

- |   |                      |       |
|---|----------------------|-------|
| F | Diagonal cut<br>—or— | _____ |
| G | Diagonal angle       | _____ |

